

# D9-BO-V1AV

## 1. Description:

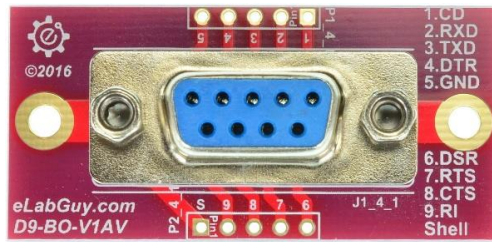
D9-BO-V1AV is a simple DB9 connector breakout board. It brings all 9 pins of a DB9 connector to headers for easy testing, prototyping and breadboard connection. For breadboard connections, user can use the two 5pin headers on both sides of the breakout board to connect to the breadboard for a steady connection.

## 2. Features:

- All 10 pins (including shield) of a DB9 connector brought out to headers
- Various connecting method chosen by users.
- 0.9"(22.86mm)X1.88"(47.8mm) board dimensions
- 2 X 3.0mm mounting holes

## 3. Parts:

- 1pc X D9-BO-V1AV PCB
- 1pc X D9-Female Vertical Connector (for D9-F-BO-V1AV only)
- 1pc X D25-Male Connector (for D9-M-BO-V1AV only)
- 2pc X 5pin 0.1"(2.54mm) spacing terminal block
- 1pc X 10pin 0.1"(2.54mm) header



**D9-F-BO-V1AV**



**D9-M-BO-V1AV**

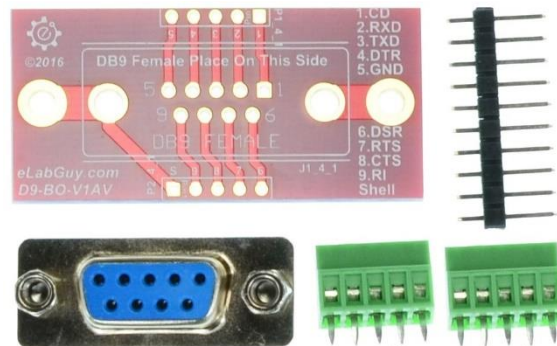


Figure 1: Parts inside the kit  
(Note: the module is not assembled, user can decide which connection to use on the module.)

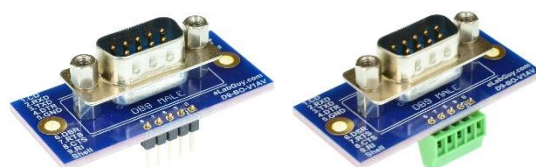


Figure 2: Various connectors chosen by user

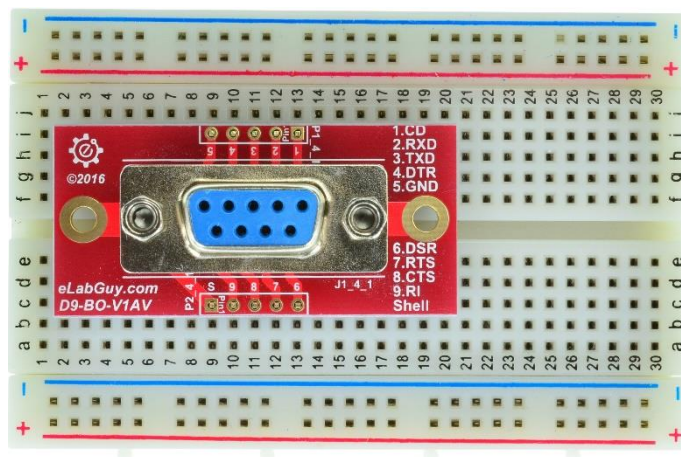
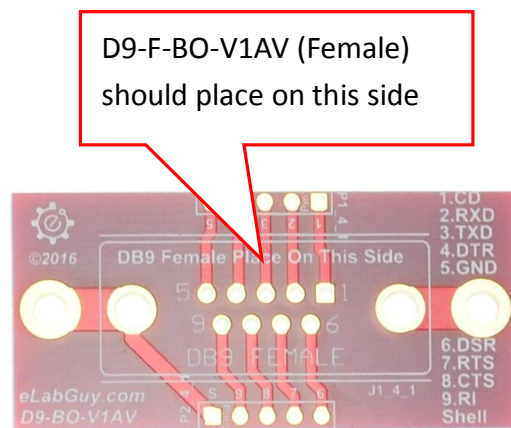


Figure 3: Attaching the D9-BO-V1AV on a breadboard

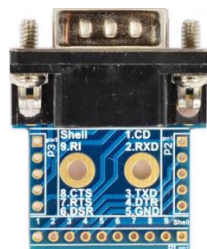
**Caution!! When assembling the D9-BO-V1AV, please make sure you place the connector on the right side.**



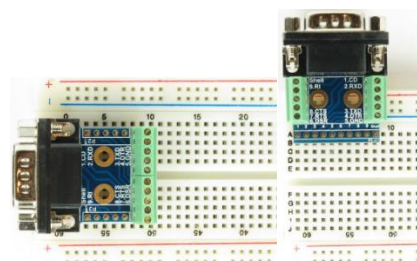
### Related products from eLabGuy:



**D9-F-BO-V2A**



**D9-M-BO-V2A**



Mounting the D9-BO-V2A on the front of a breadboard